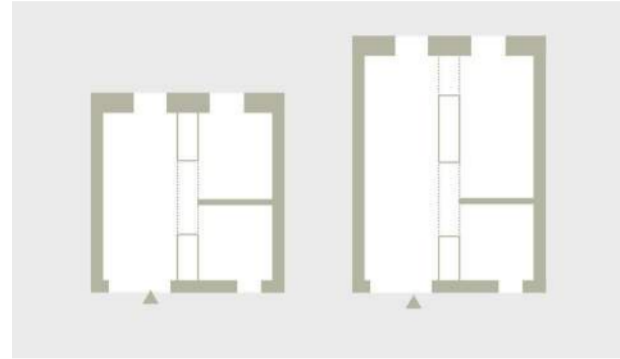


vilarejo

Celebrating the ordinary

Facilitating daily life in a comfortable and inviting environment, with a human scale and a familiar expression, a place one can relate to, a place that truly feels like home. Where independence is celebrated, social connections are nurtured, and all essential amenities are easily accessible. With care services readily available when needed, but almost invisible as well. Through a thoughtful blend of traditional Portuguese elements and contemporary know-how, in architecture as well as in technology, we strive to create a sustainable, affordable and most of all an enjoyable living environment to last many decades.



Building block

The individual living unit forms the basic element for our settlement. A compact module for one, slightly deeper for two. With light from both sides and a sleeping area on the side, so one doesn't live in a bedroom. Accessible in a wheelchair, enough space for helping hands in the bathroom and bedroom without overtaking the identity.

Settlement

By repeating and organizing these modular dwellings a settlement is formed. The density varies according to the specific location on the site, the orientation and the surrounding landscape. Three ensembles and an assemblage of courtyards, each with their specific identity. Unity in diversity.

Fast lanes

The vertical circulation in the center, the heart of the settlement facilitates fast lanes. Easy, comfortable efficient routes for care, goods & delivery and a quick, weatherproof way home.

Scenic routes

Along the way, there are plenty opportunities to experience a changing perspective, vistas that arouse curiosity and invite you to continue your journey or dwell and contemplate.

A sense of familiarity

Identifiable surroundings, inspired by the vernacular. Rough outer walls, deeply set windows, and shutters provide protection against weather and noise. Well defined geometrical contours, low pitched roofs and articulated building edges. Portico's and balconies intertwine the build and the unbuild, facilitating a sheltered, intermediate zone.

Sustainable comfort

Combining traditional Portuguese techniques with sustainable materials and contemporary fabrication. Incorporating needed climate control systems but facilitating the best opportunities not to be needing them. Thick protecting walls, traditional wood joinery, a ventilated roof, and shading shutters are combined with a modular building system and modern indoor climate technologies to create a sustainable, energy-efficient, safe, and comfortable living environment.



On this crisp spring day, the café is busy, the preparations for a communal dinner under the pergola fill the air with anticipation (and the smell of a nice stew). Visiting family is fine, but, how good to be back home.





Section A-A 1:200

How it works

1. The central building features vertical circulation, connecting the apartments, storage, technical facilities, and healthcare functions. The smaller individual one-person studio's are part of this building and arranged around the conditioned orangery space.

2. Parking is available on the front premises. Efficient delivery of people and goods is facilitated through the street gate arriving near the central entrance, the heart of the settlement.

3. The public café at the street-side serves as an outpost of the kitchen and the multifunctional gathering room. The café and the gathering room are connected with a pergola for sun and wind protection, ideal for outdoor gatherings.

4. The chapel and library are part of the secluded contemplative courtyard, with the communal garden.

Program

20 x ensuite single rooms
20 x ensuite twin-rooms

20 m² nurse room
45 m² main entrance (desk and lounge)
15 m² therapy room
25 m² physiotherapy room
40 m² storage
78 m² orangery/courtyard with terrace

80 m² café/neighbourhood room with terrace
35 m² multifunctional gathering room
55 m² kitchen with storage

22 m² chapel
12 m² library



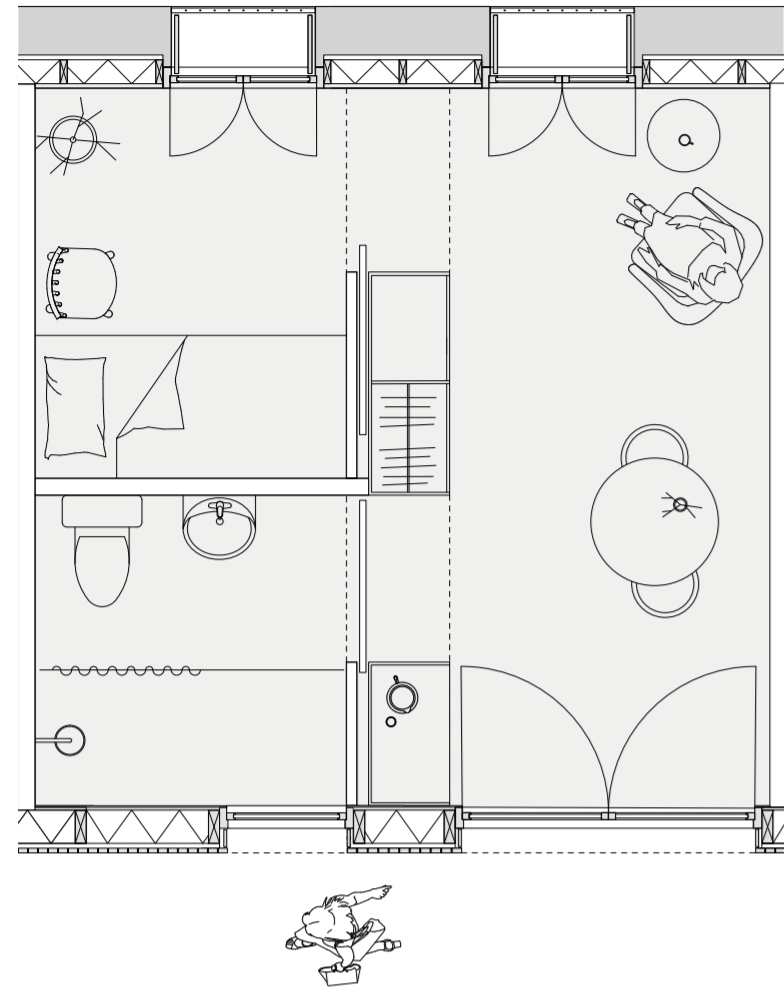
Situation 1:200



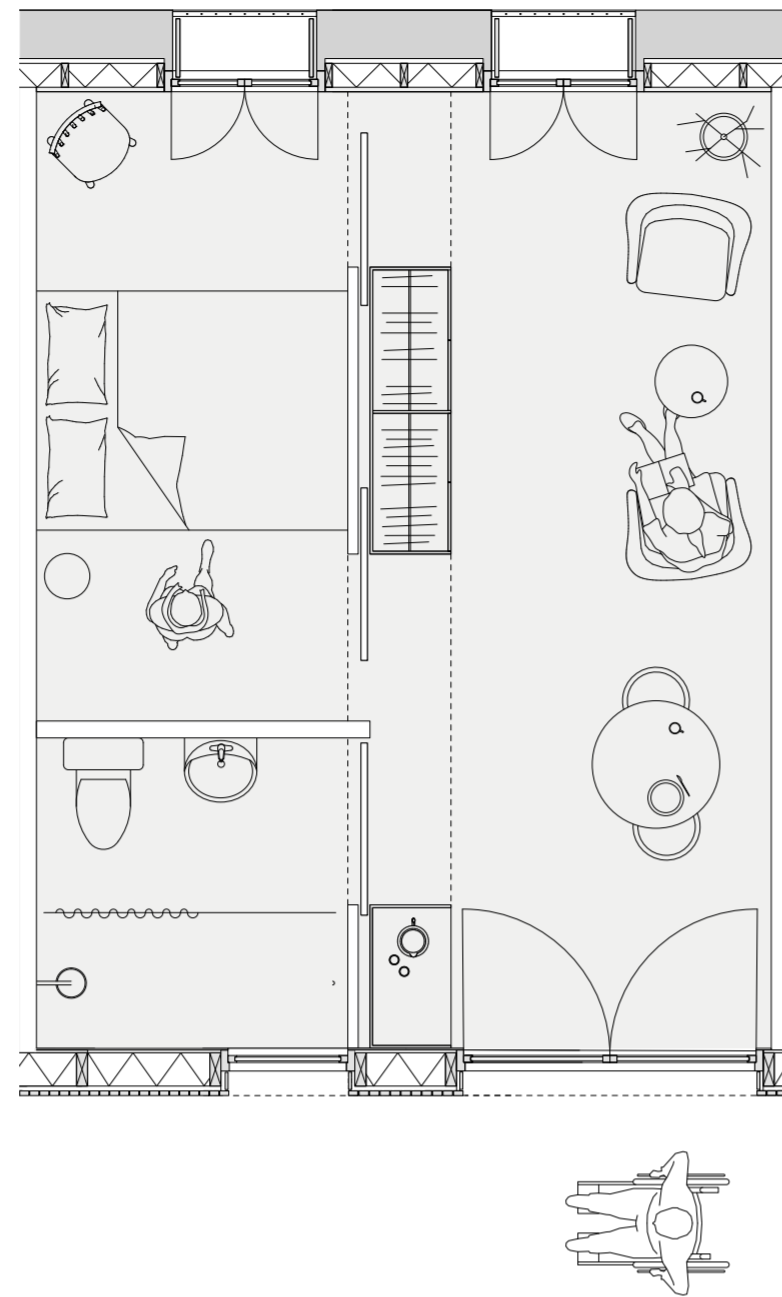
Resting my legs, contemplating, enjoying the fast-moving clouds above the hills in the distance, gathering strength to venture towards the chapel, or will it be the library today?



vilarejo



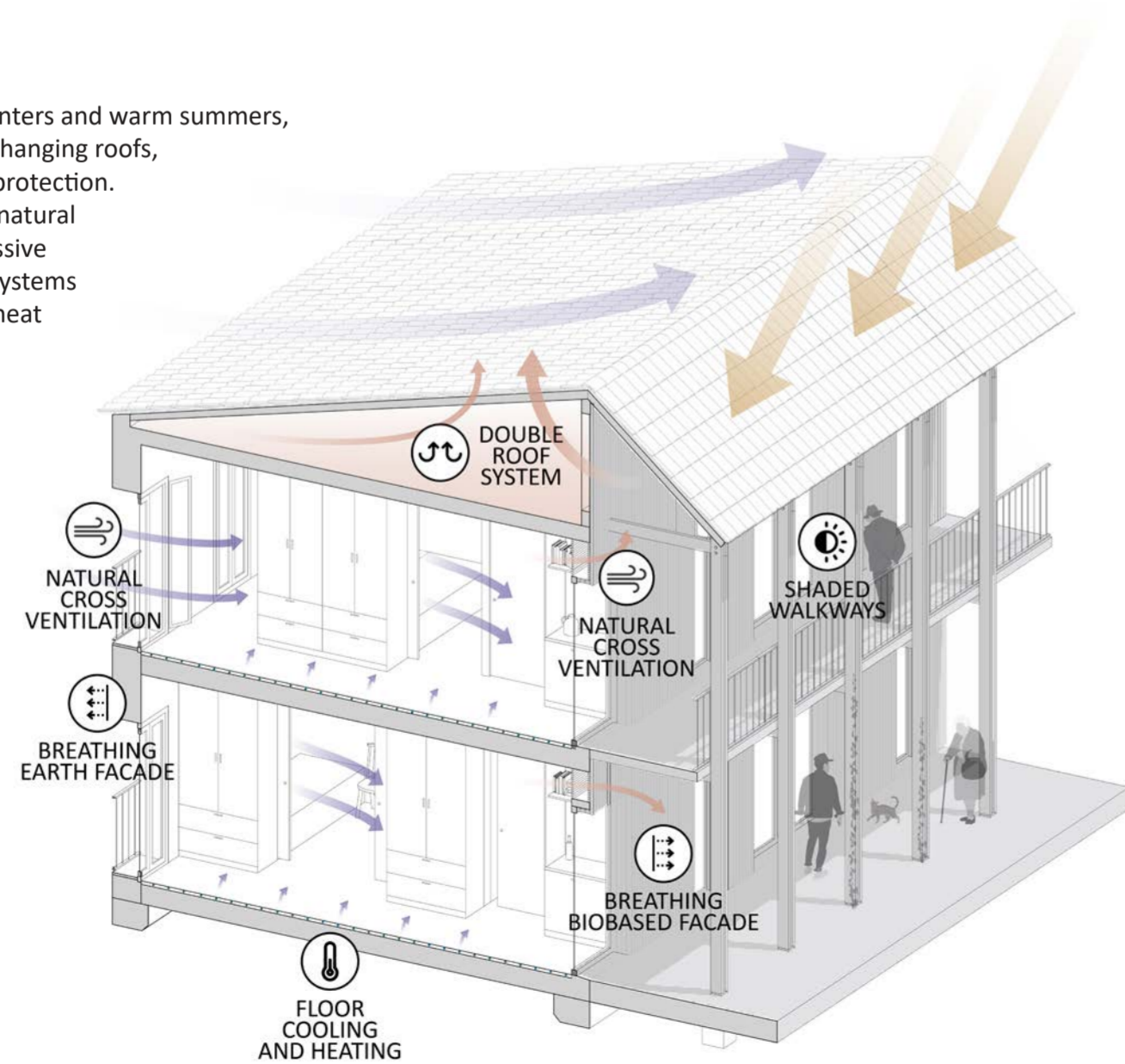
Floorplan of the single room 1:50
4,6 x 4,6 = 21 m² usable area



Floorplan of the twin-room 1:50
4,6 x 6,3 = 29 m² usable area

Low Tech

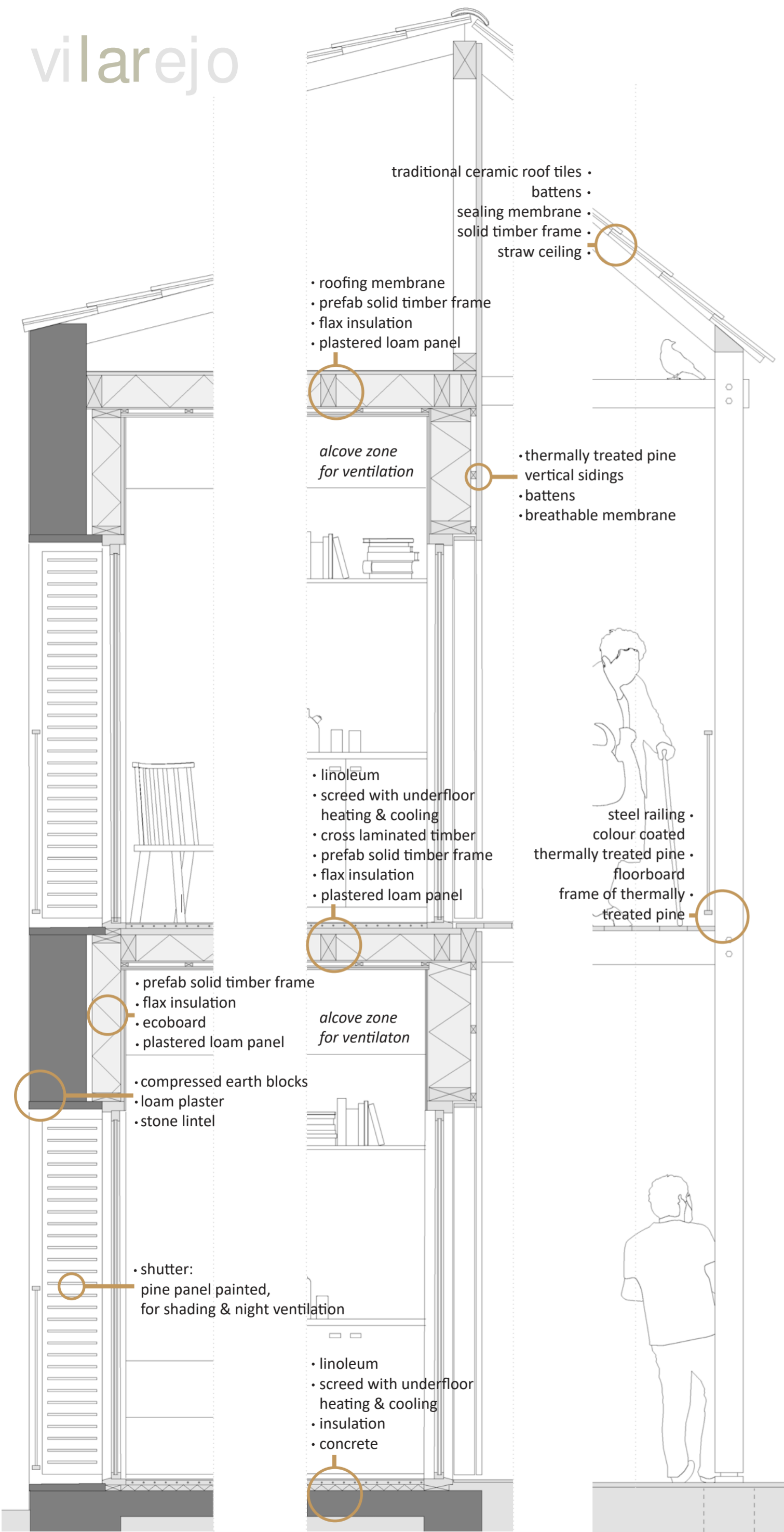
In Portugal's climate, with cold winters and warm summers, the building uses thick walls, overhanging roofs, and gallerias for shade and wind protection. Openings on both sides promote natural ventilation, complemented by passive floor cooling and heating. These systems are connected to a central earth-heat pump powered by PV-cells on top of the orangery, integrated in the glazing.



The library it is, too chilly for me today outside, magazines with the soothing sounds of gardeners outside (the brave ones) will do.



vilarejo



Fragments 1:20

